

The FIG logo consists of the letters 'FIG' in white, bold, sans-serif font, set against a red square background.

# FIG WORKING WEEK 2017

Helsinki Finland

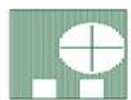
29 May - 2 June 2017

***What is the FIG Asia Pacific Capacity Development Network?***

***What are the capacity development challenges with respect to – Geospatial and Geodetic Infrastructure?***

Surveying the world of tomorrow –  
From digitalisation to augmented reality

Organised by



Platinum Sponsors:



# The International Federation of Surveyors (FIG)

*Established in Paris 1878;*

*Federation of national associations;*

*Represents all surveying disciplines;*

*UN-recognised non-government organisation (NGO);*

*Its aim is to ensure that the disciplines of surveying and all who practise them meet the needs of the markets and communities that they serve;*

*It provides an international forum for discussion and development aiming to promote professional practice and standards*

*Liaise with like minded organisations - UN GGIM, IAG*



UN-GGIM  
UNITED NATIONS INITIATIVE ON  
GLOBAL GEOSPATIAL  
INFORMATION MANAGEMENT

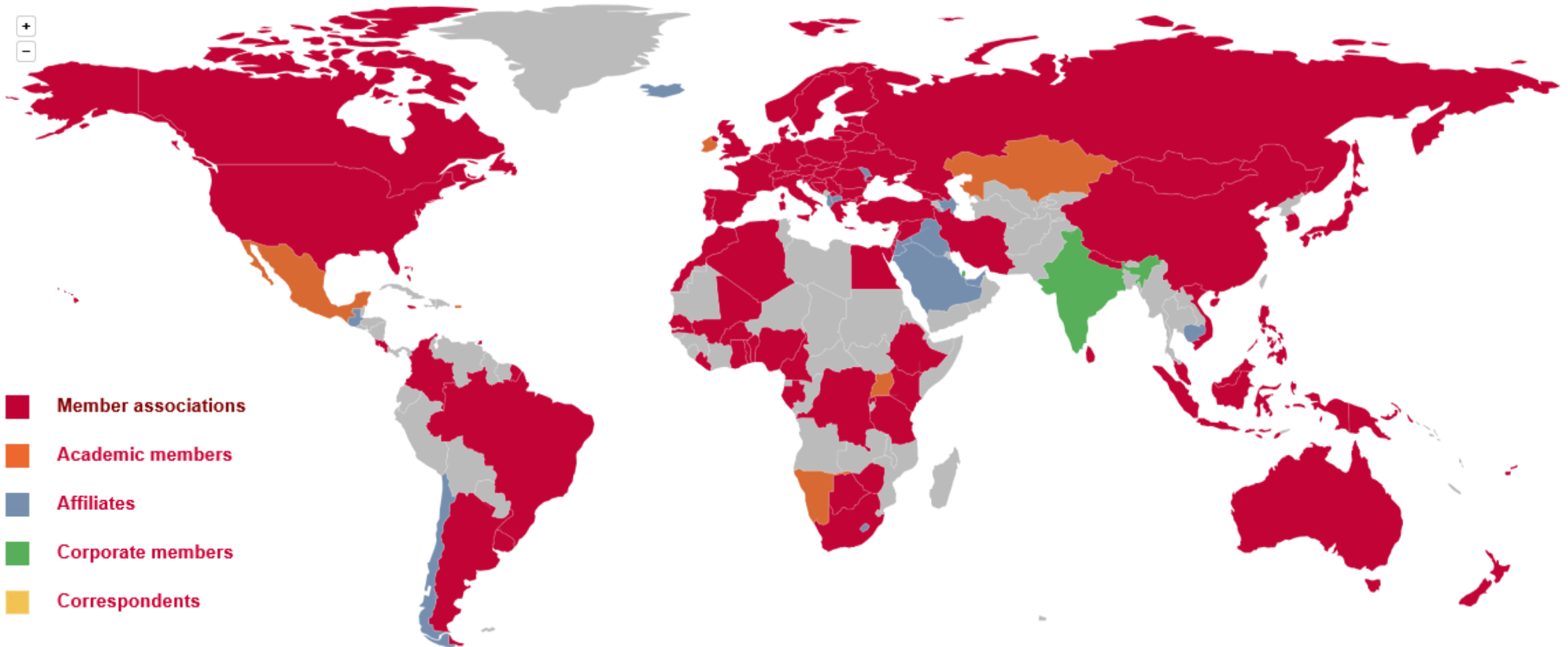


<https://www.fig.net/>



International Fédération of Surveyors  
Fédération Internationale des Géomètres  
Internationale Vereinigung der Vermessungsingenieure

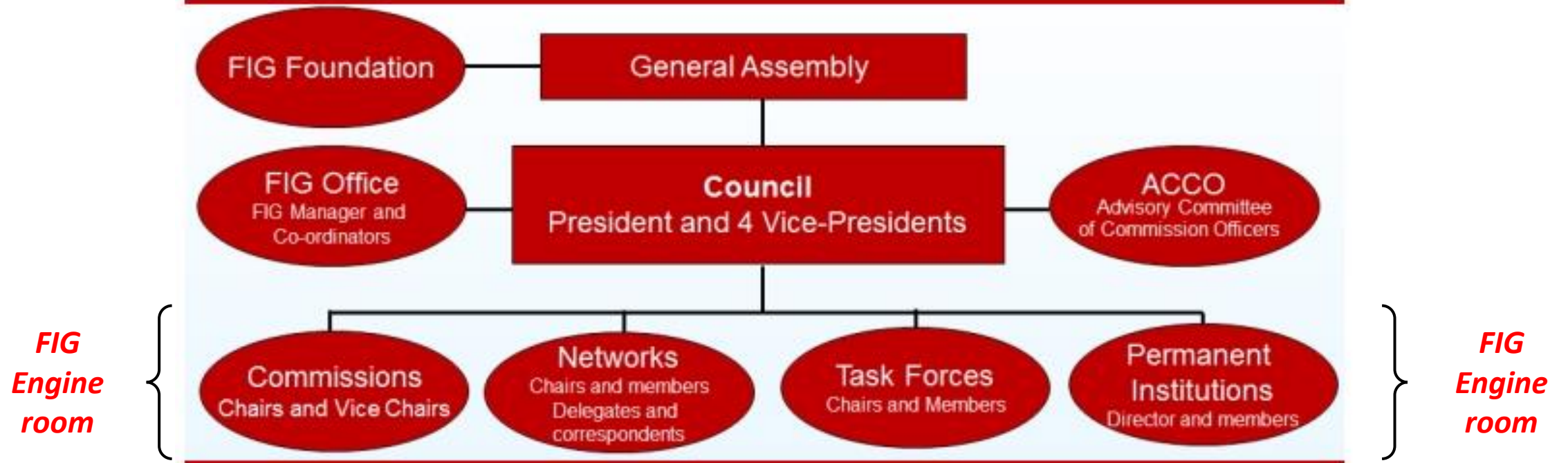
FIG Member Associations  
2016



Through different membership categories 121 countries are represented in FIG

# The FIG Organistaion

## FIG ORGANISATION



# FIG Asia Pacific Capacity Development Network

*What is capacity development?*

***It is about understanding the challenges / obstacles;  
that hinder an individual / organisation / community  
from accomplishing their objectives; and then  
developing the necessary knowledge / skills / abilities /  
competencies / frameworks to achieve them.***

# FIG Asia Pacific Capacity Development Network

*What is capacity development? It is also about .....*

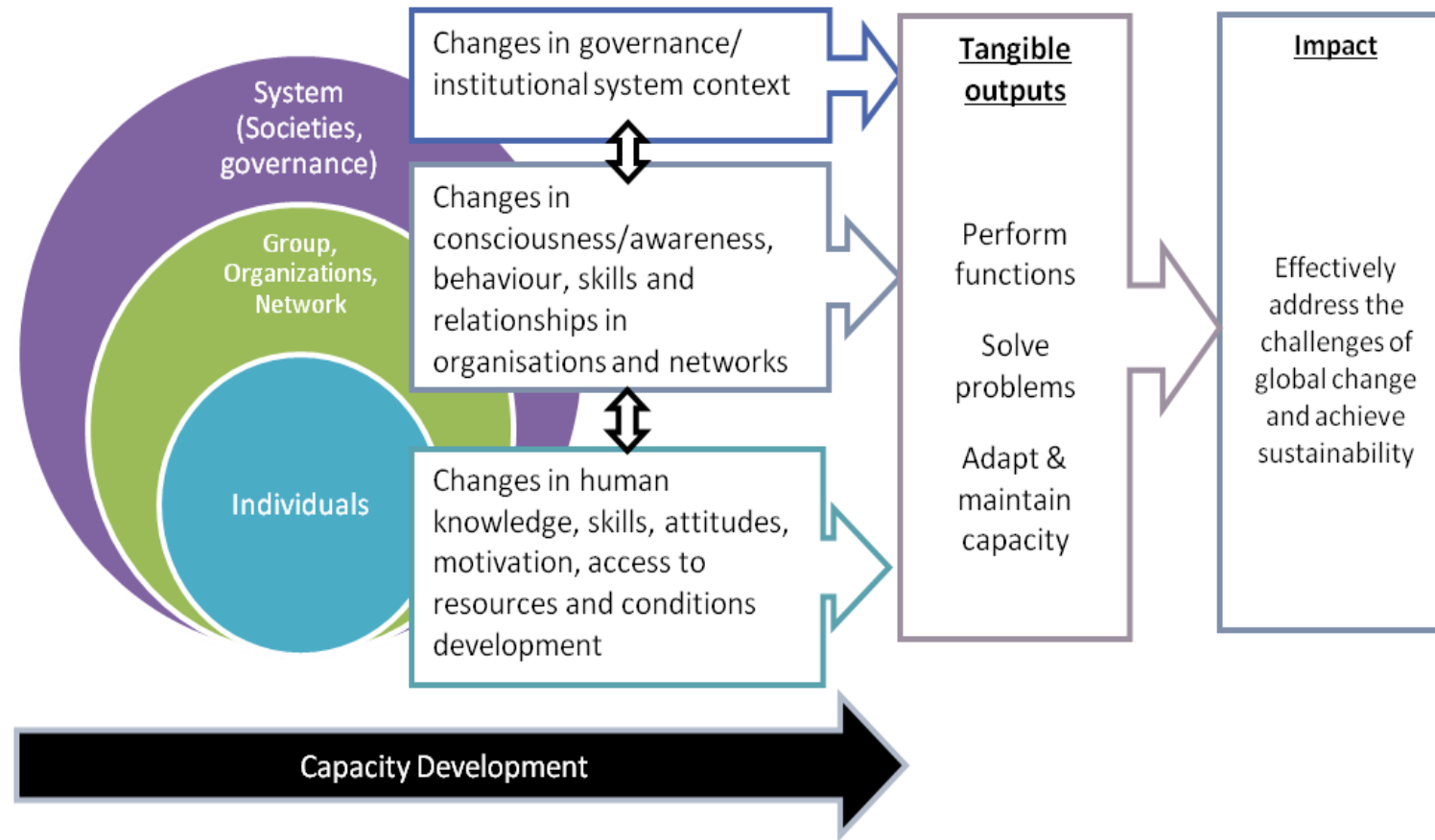
***The process of learning to adapt to change....  
(or shifting the paradigms of practice)***

***Who and how and where the decisions are made....***

***Being supported by a sustained resource and political  
commitment to yield longer term results ....***

*Source : Allan Kaplan*

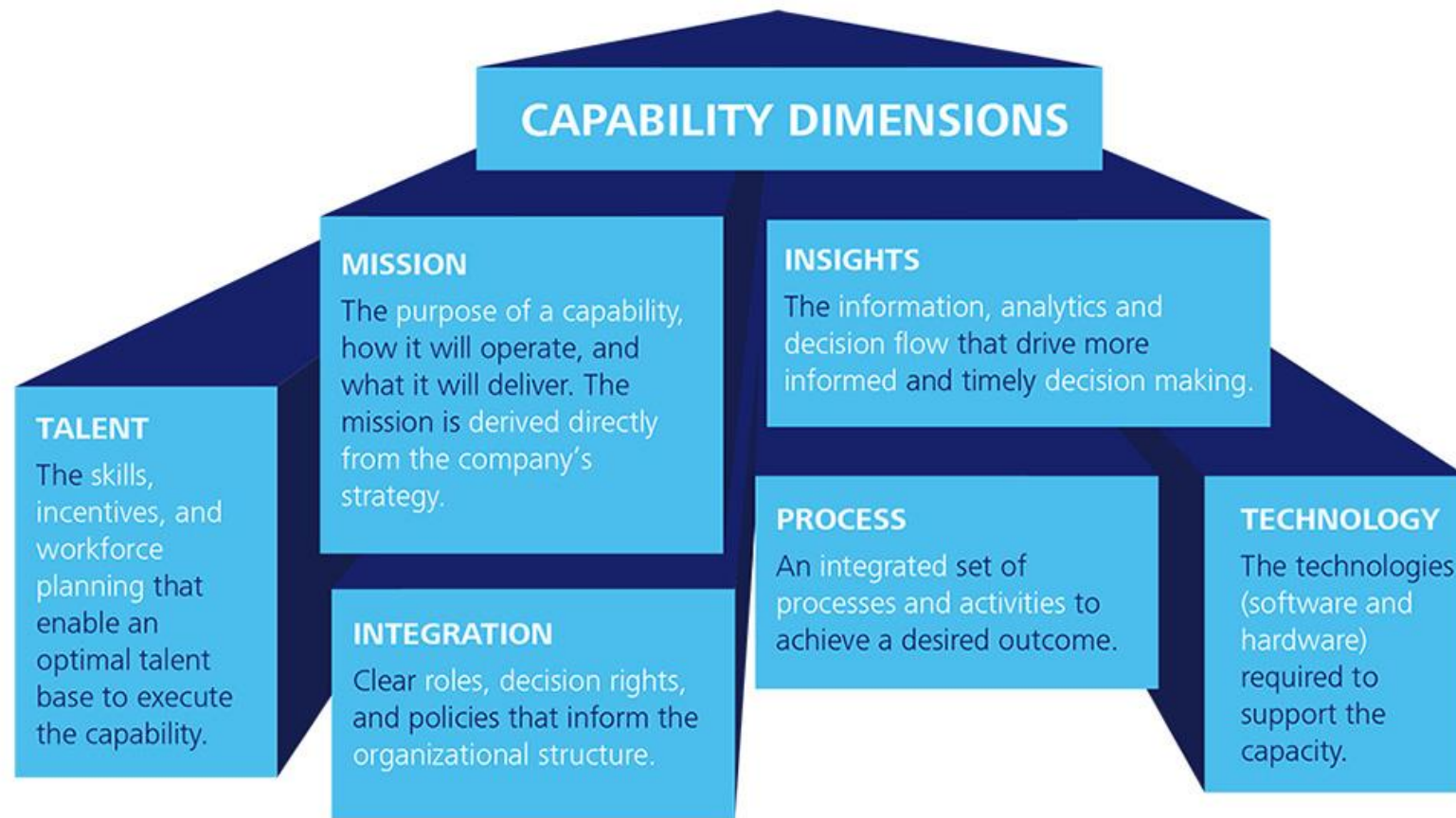
# FIG Asia Pacific Capacity Development Network



Source – Asia Pacific Network for Global Change Research

<http://www.apn-gcr.org/programmes-and-activities/capable/>

# FIG Asia Pacific Capacity Development Network



Source – Deloitte – “..... illustrates some of the building blocks that, as an integrated set, serve as the foundation of an organizational capability.”



# FIG Asia Pacific Capacity Development Network

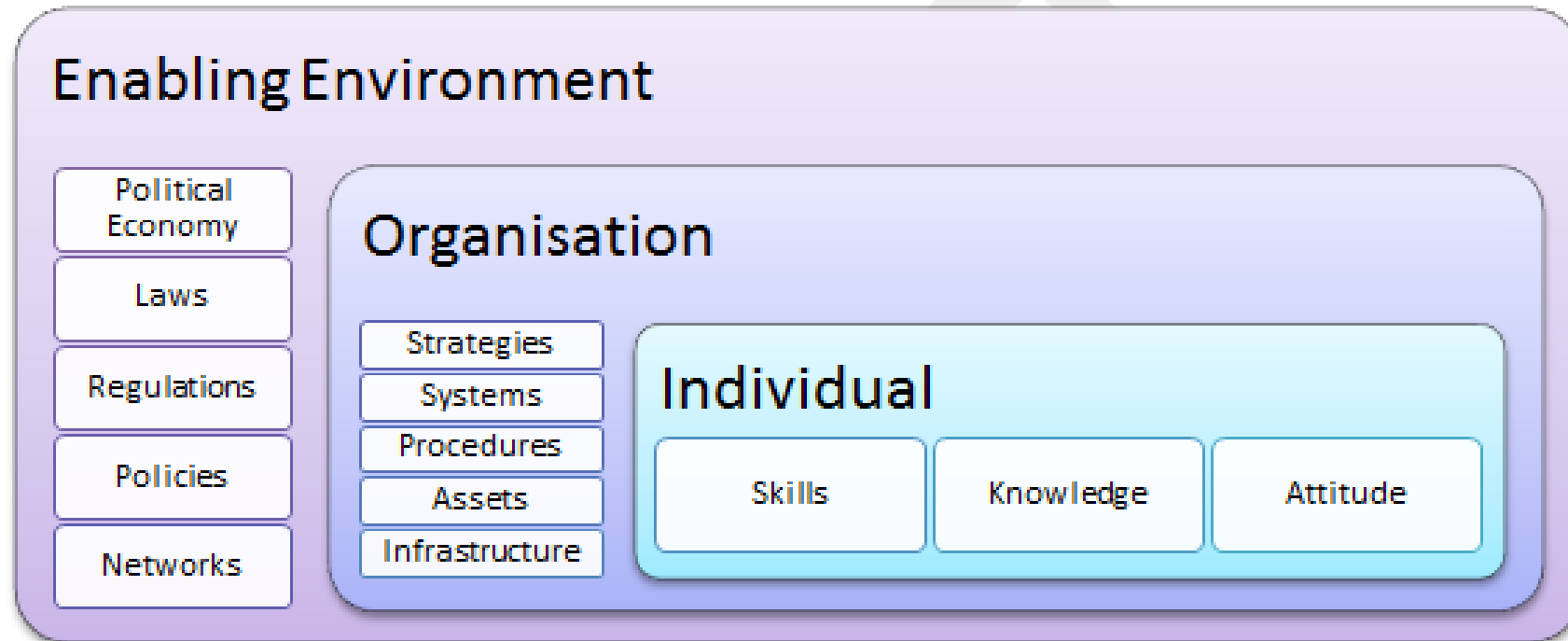
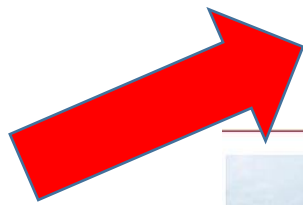


Figure 2 Inter-related levels of geospatial and surveying capacity.

# FIG Asia Pacific Capacity Development Network

*Collective FIG / UN GGIM AP “Capacity Development Network” outcome -*

***“Responsible governance frameworks and integrated administrative systems of tenure (rights and interests) for land and marine, are underpinned by sustainable fit for purpose geospatial and survey infrastructure and information management”***



**Modernisation !**



# FIG Asia Pacific Capacity Development Network

Outputs of AP CDN -

- Professional geospatial scientists and surveyors, ***have the capability to address the regional social, economic, environmental and technological challenges*** associated with the UN Sustainable Development Goals (SDGs).
- Regional capability and their activities have progressed through ***alliances and relationships with*** FIG, UN GGIM AP, relevant ***like-minded bodies other agencies and / or development partners.***

Sustainable Development Goals



# FIG Asia Pacific Capacity Development Network

Outputs of AP CDN -

- Regional geospatial and survey community are ***self-reliant*** and have a ***culture and environment of learning, innovation, a blend of mature and young professionals, and a gender equity base.***
- Regional geospatial and surveying challenges are ***resolved by a regional, unified, coordinated and collaborative*** approach.



# FIG Asia Pacific Capacity Development Network

***Network of individuals or representatives from –***

- Pacific Geospatial Surveying Council
- Pacific Community - Geoscience Division
- Australian Government agencies - Geoscience Australia, Bureau of Meteorology,
- New Zealand Government agencies - Land Information New Zealand (LINZ),
- Asean Flag
- Geospatial Information Authority of Japan



# FIG Asia Pacific Capacity Development Network

***Network of individuals or representatives from -***

- UN GGIM AP Working Groups, UN ICG
- International Association of Geodesy (IAG) Working Groups
- FIG Commissions, FIG Young Surveyors Network, and FIG Corporate entities
- Professional Surveying Organisations - Surveying and Spatial Sciences Institute (SSSI), New Zealand Institute of Surveyors (NZIS), Fiji Institute of Surveyors (FIS), Japan Federation of Surveyors (JFS)



# FIG Asia Pacific Capacity Development Network

## *Role of the FIG AP CDN of professionals -*

- An independent advocacy role to the Asia Pacific geospatial and surveying community
- Provision of technical, administrative and professional support and information
- Organise, facilitate and actively participative in -
  - Discussion forums
  - Meetings
  - Seminars
  - Workshops
  - Technical Sessions
- Encourage co-operation and collaboration

# FIG Asia Pacific Capacity Development Network



FIG Working Week 2016



CHRISTCHURCH, NEW ZEALAND  
2-6 May 2016

Recovery  
from disaster



***Role of Surveyors – in disaster management. “Build back better” and developing resilience***



# Datum Unification and Kinematics Technical Seminar FIG WW - Christchurch May 2016



3D Reference Frames / Datums ; Vertical Reference Frames / Datums ; Kinematic Frames and Deformation Modelling ; Case Studies ; International Geodesy Initiatives ; Geodetic Infrastructure and GIS ; Geodetic Software

<http://www.fig.net/fig2016/commission5.htm>

# SIDS Workshop - Responding to Climate Change and Security of Tenure : The Role of Land Professionals FIG WW - Christchurch May 2016



Vulnerabilities for SIDS; Challenges faced by SIDS in the land sector; Climate change, vulnerability and the risk of natural disasters; Urbanisation; and Challenges for improved land governance.

***"FIG Christchurch Declaration on Responding to Climate Change and Tenure Insecurity in Small Island Developing States - The Role of Land Professionals"***

[https://www.fig.net/resources/proceedings/fig\\_proceedings/fig2016/ppt/sids/christchurch\\_declaration\\_sids.pdf](https://www.fig.net/resources/proceedings/fig_proceedings/fig2016/ppt/sids/christchurch_declaration_sids.pdf)

# Geospatial and GNSS CORS Infrastructure and Systems Forum UN GGIM AP, Kuala Lumpur Oct 2016



Status of Regional Geospatial and GNSS CORS Infrastructure and Systems ; Why Geospatial / Geodetic Infrastructure ; Link to SGDs; Reference Frames and GNSS CORS Theory ; Modernisation of Geospatial / Geodetic Infrastructure ; Role of Organisations and Sectors

***FIG AP CDN and UN-GGIM-AP WG1 – “The Geodetic Reference Frame Resolution”***

<http://www.un-ggim-ap.org/>

# Various Technical Forums, Seminars, Meetings – Pacific Island Countries and Territories 2013-2016



***Independent advocacy and advisory role to the Asia Pacific geospatial and surveying community, in particular the Pacific Geospatial and Surveying Council (PGSC)***

# Pacific Height Datum Workshop – Saturday 26 Nov 2016

An interactive workshop on height datums and practical height survey issues or problems.

- Why an accurate height datum is important - Dr John Dawson (UN GGIM AP WG1)
- Heighting Fundamentals and Ellipsoidal Height System – Mr. Nicholas Brown (GA)
- Bathymetry – Mr. Jens Kruger (PC Geoscience)
- The Geoid and Geoid Models - Mr. Matt Amos (LINZ)
- Summary, Actions and Discussion.



# FIG AP CDN and UN GGIM AP WG 1 - Activities 2017



Participation in –

- General Assembly / Technical Sessions
- UN GGIM GGRF Meeting
- Asia Pacific Capacity Development Network Meeting
- UN Resolution on GGRF
- FIG Commission 5 Annual Meeting
- Regional Bodies Forum

# FIG AP CDN and UN GGIM AP WG 1 - Activities 2017

- Vertical Reference Frame in Practice - ***Kobe, Japan, 29-30 July 2017*** in conjunction with the IAG-IASPEI Joint Scientific Assembly
- Workshop - ***Kamamoto, Japan*** in conjunction with the UN-GGIM-AP Plenary Meeting, ***October 2017***
- Reference Frames - ***China, September 2017***
- Modernising Datum Workshop Operational GNSS CORS, Pacific Islands - ***February 2019***



# FIG Asia Pacific Capacity Development Network

## Discussion -

- Capacity Building challenges
- Expanding the network and opportunities
- Exploring more technical involvement from other Commissions on related challenges
- How can activities be done better



# FIG Asia Pacific Capacity Development Network

***What are the capacity development challenges  
with respect to – Data, Maps, Geospatial and  
Geodetic Infrastructure?***

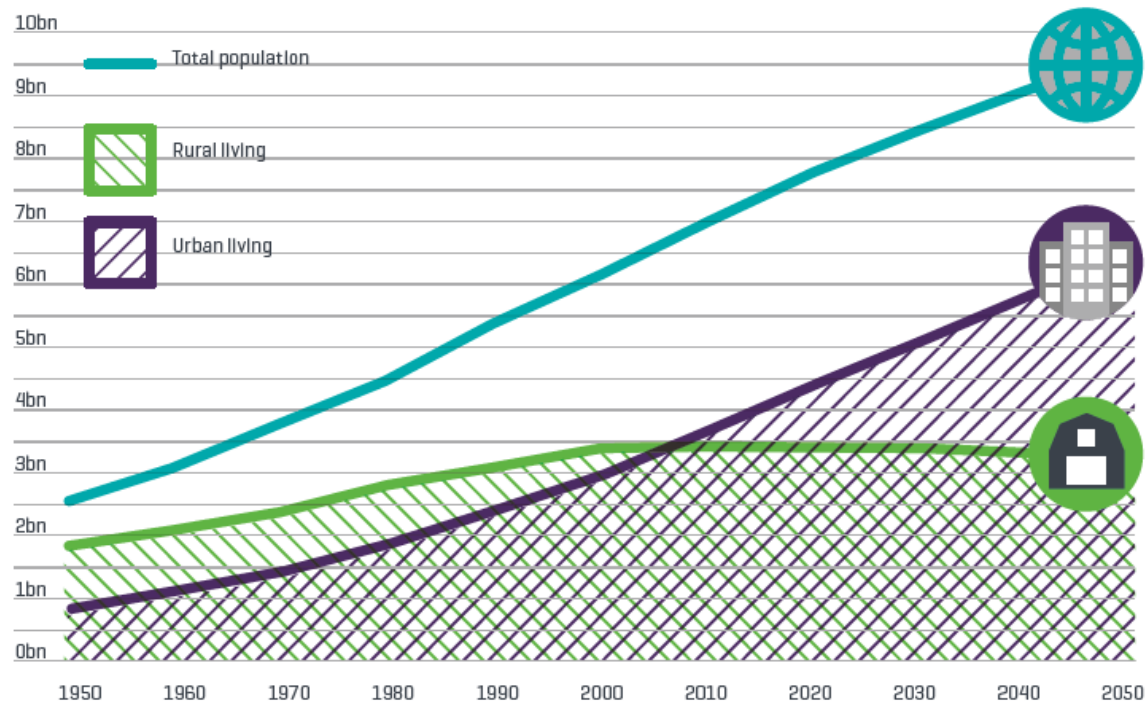
# FIG Asia Pacific Capacity Development Network

***What are the technical, social, economic changes or trends that are going to impact skills with respect to – Data, Maps, Geospatial and Geodetic Infrastructure?***

# What are the Trends / Changes?

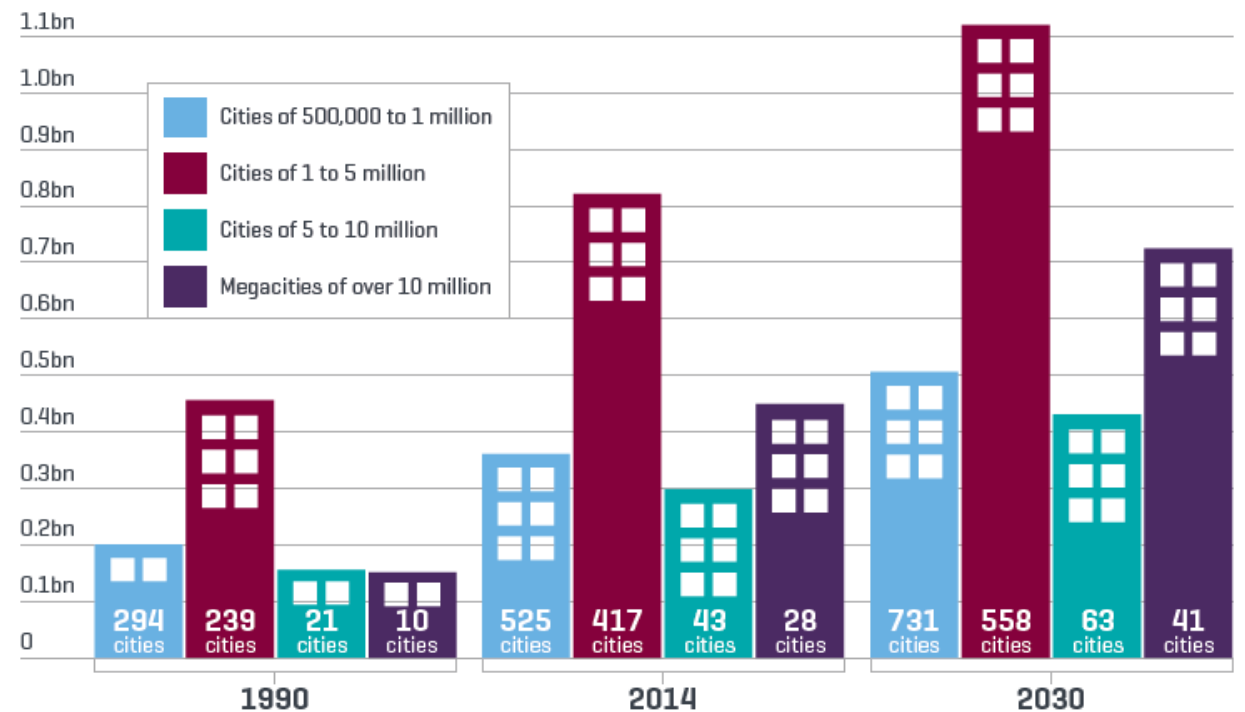
- Mega-cities, smart-cities - **rapid urbanisation**; “2/3 in cities by 2050”

Figure 2.1 World population: total, urban and rural



Source: UN DESA

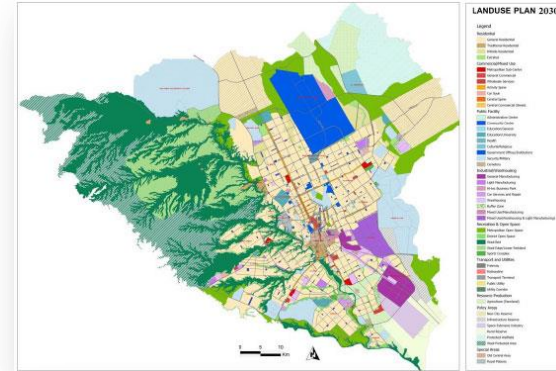
Figure 2.2 City populations 1990, 2014, 2030



Source: UN DESA

# What are the Trends / Changes?

- ***Rapid Urbanisation will impact -***
  - Provision of urban planning
  - Sustainable development
  - Management of utilities and services – power, water, waste, transport
  - Infrastructure and asset administration
  - Affordable and efficient housing
  - Environmental management
  - Food / resource prod. and mgt.

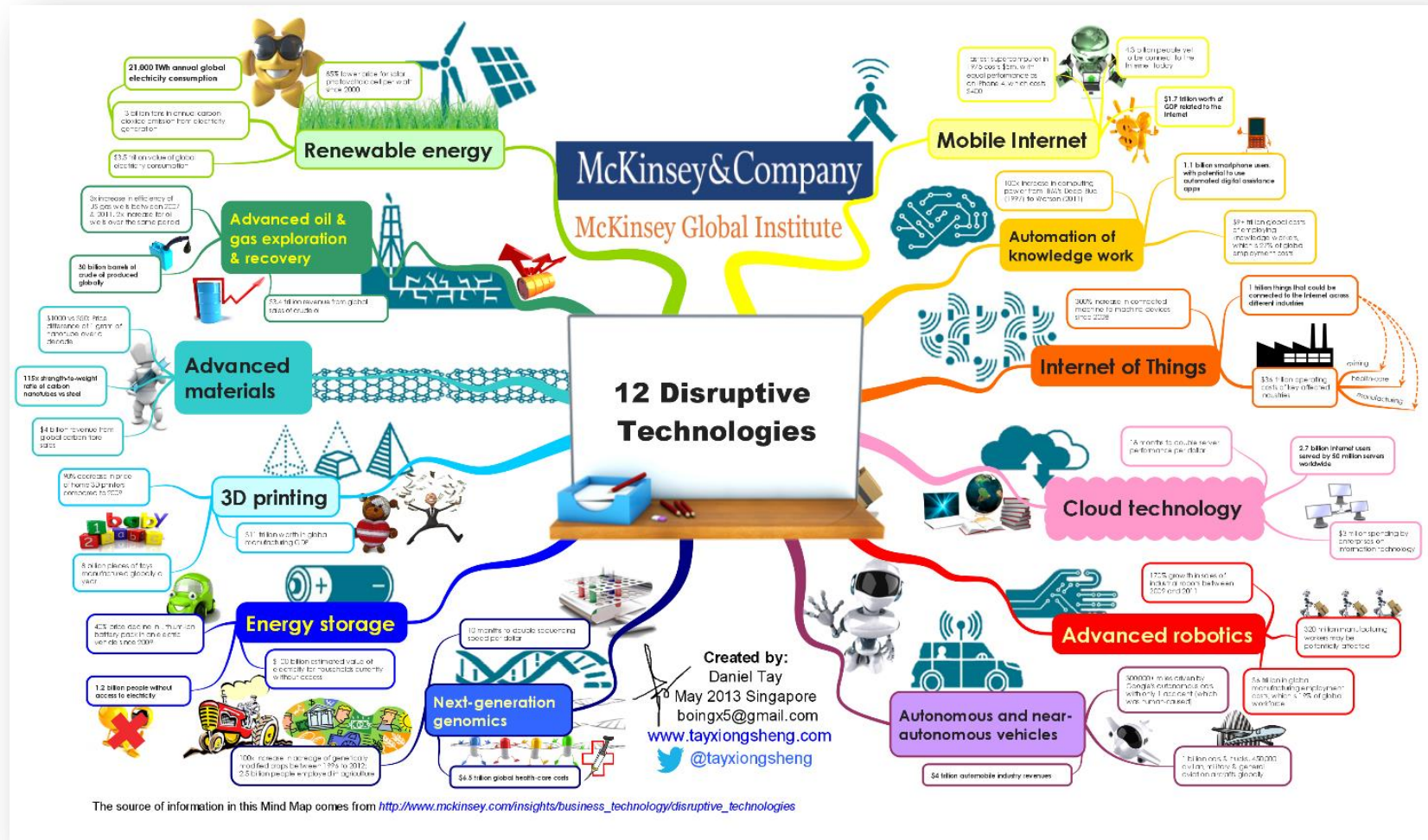


# What are the Trends / Changes?

- **Disruptive technologies**

(biggest impact 2025)

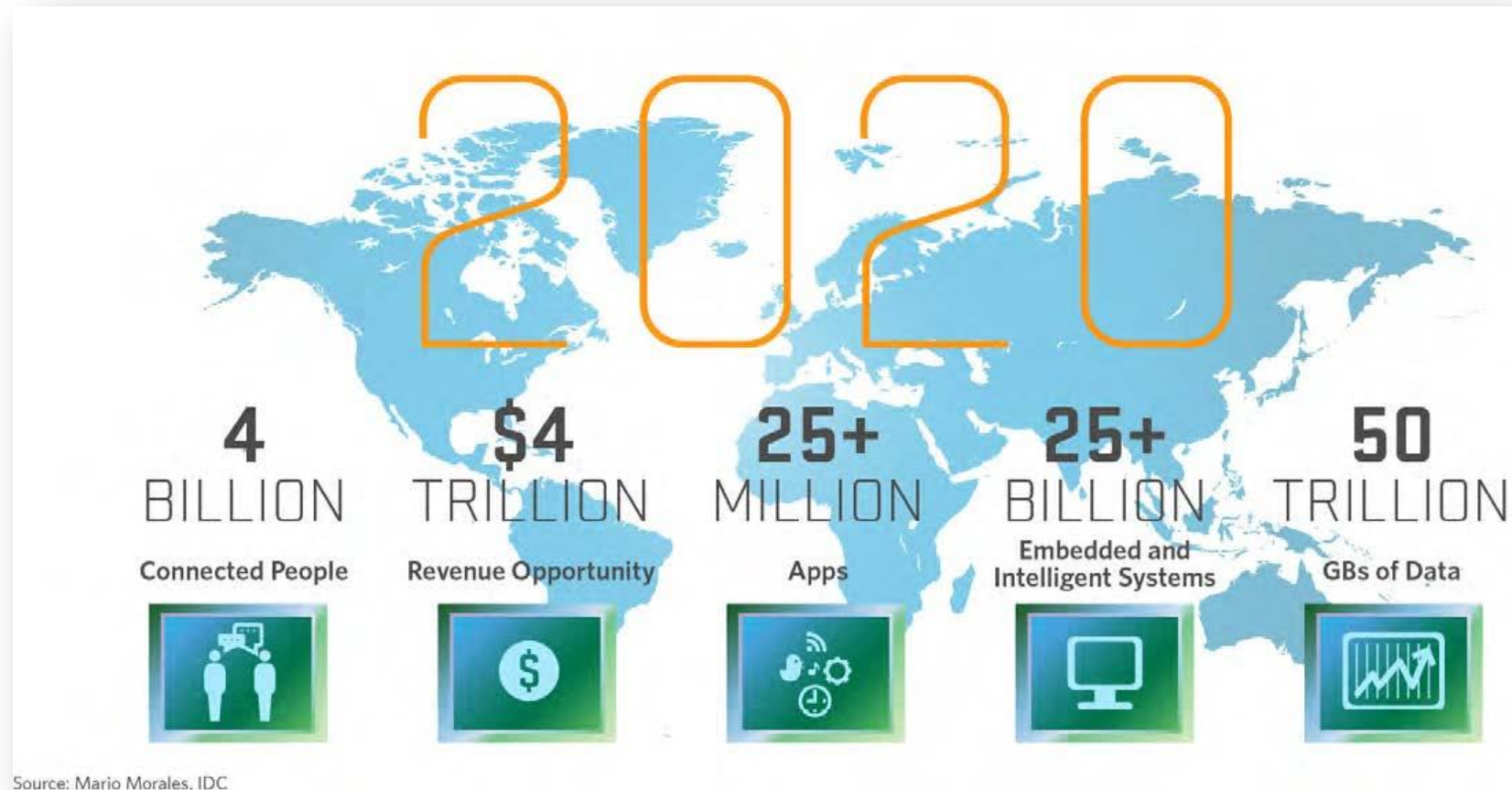
- Mobile internet,
- Automation of knowledge work,
- IoT,
- Cloud,
- Robotics,
- Autonomous vehicles
- 3 D printing



# What are the Trends / Changes

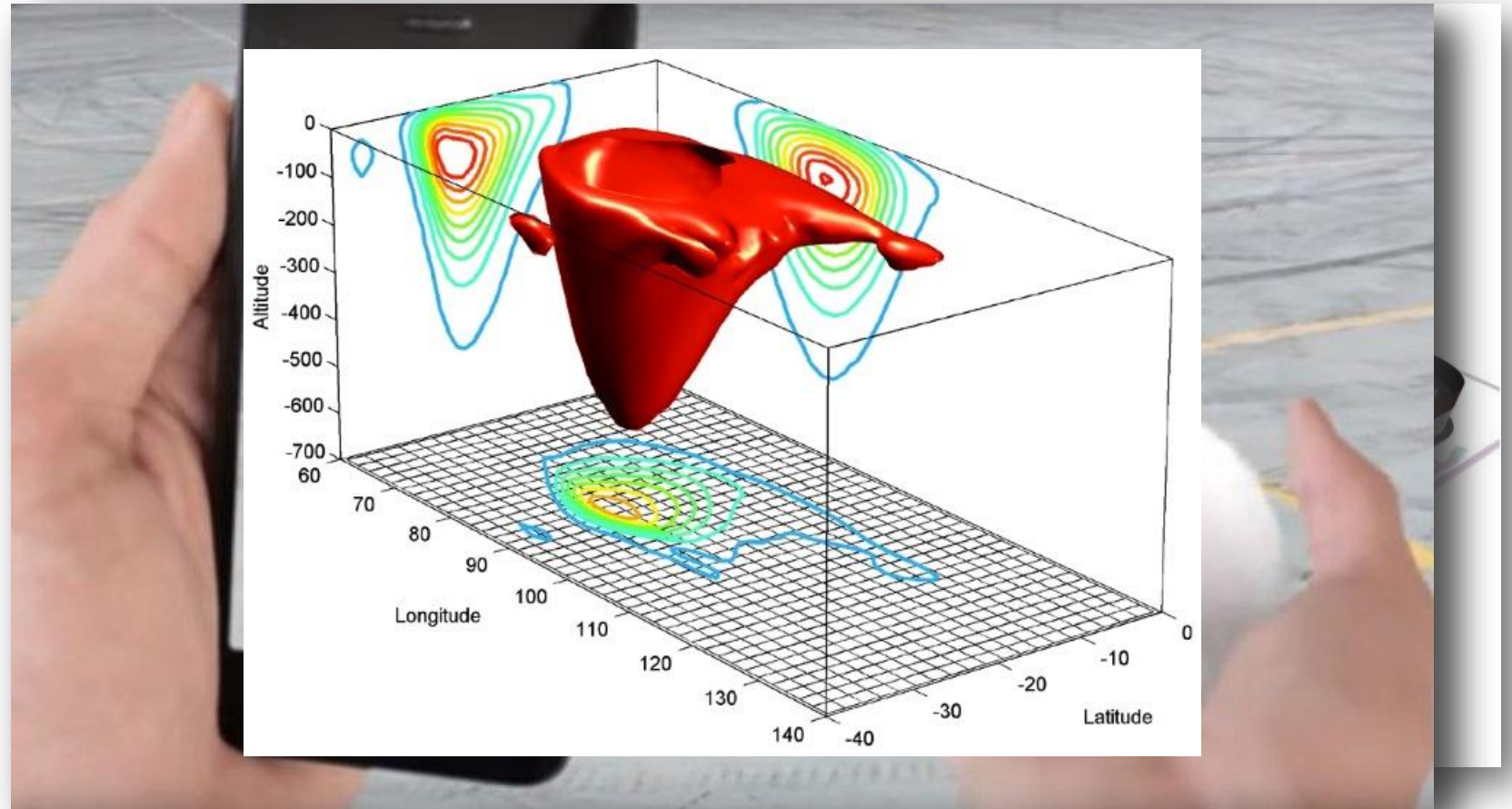
- **Impacts –**

- Greater connectivity
- Real time streaming and analysis ,
- Revenue and business opportunities,
- More “apps”
- Embedded intelligent systems,
- ↑'ed data volumes,
- Privacy / legal matters – custodianship, ownership, liability etc



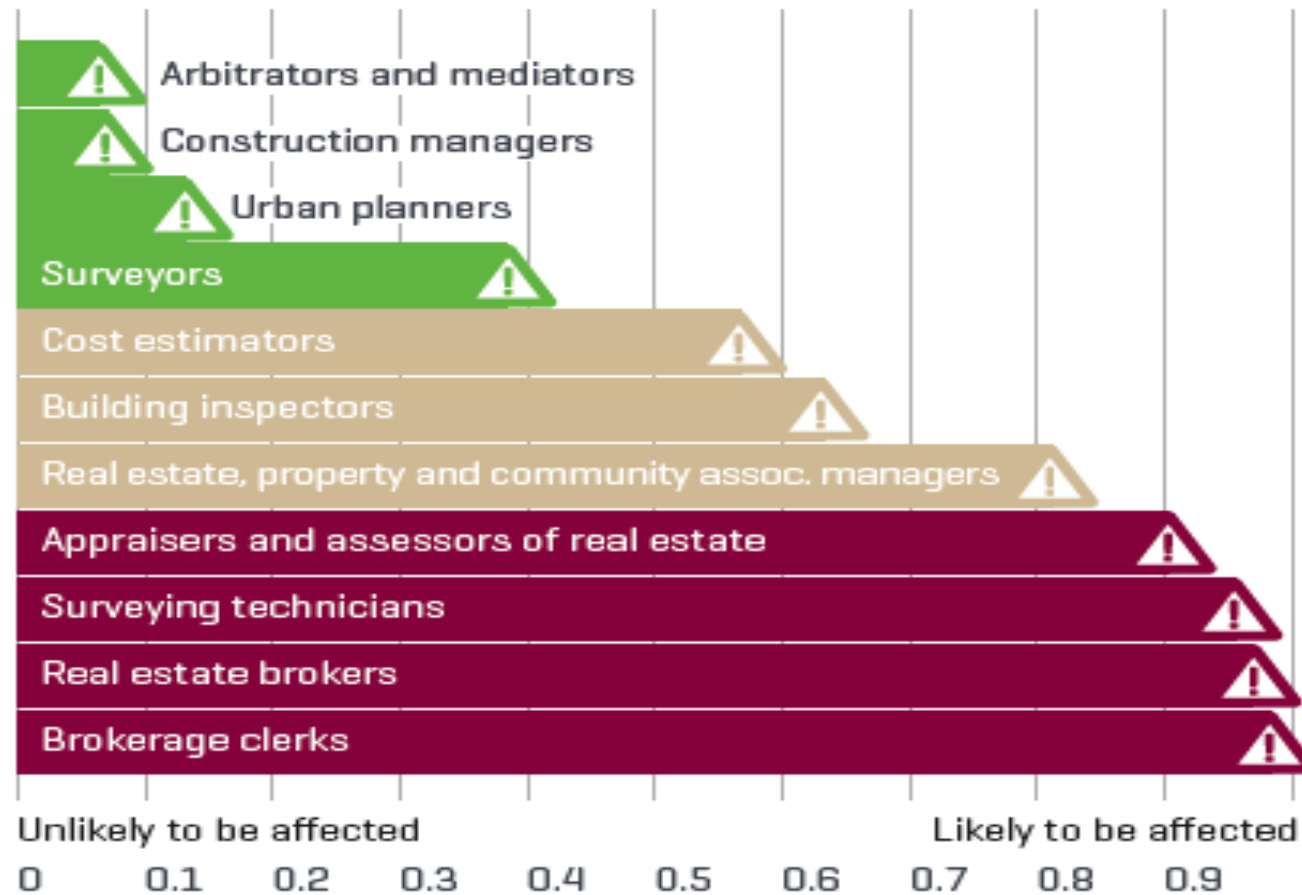
# What are the Trends / Changes?

- **Digital mapping –**
  - BIM and 3-D systems
  - Product /resources / asset inventory and tracking
  - Merging of physical and virtual worlds
  - Computational and visualisation software



# What are the Trends / Changes?

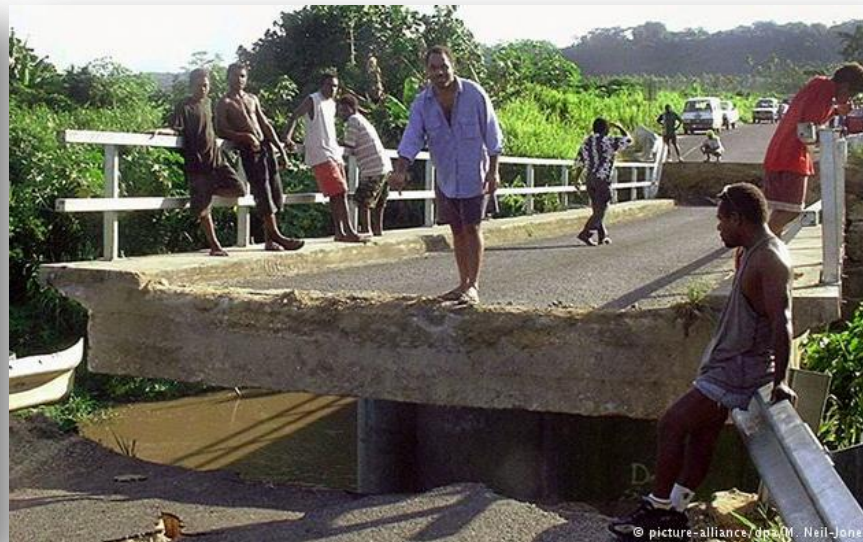
**Figure 4.2 Probability of professions being affected by technology**





# Environmental changes

- *Climate change, sea level rise, earthquakes, tsunamis, cyclones*
- *Impacts* – capability to manage disaster relief, re-construction and build resilience



# Environmental changes

## **2015** disasters<sup>(1)</sup> in numbers

**346 reported disasters**

**22 773 people dead**

**98.6 million people affected**

**us\$66.5 billion economic damage**

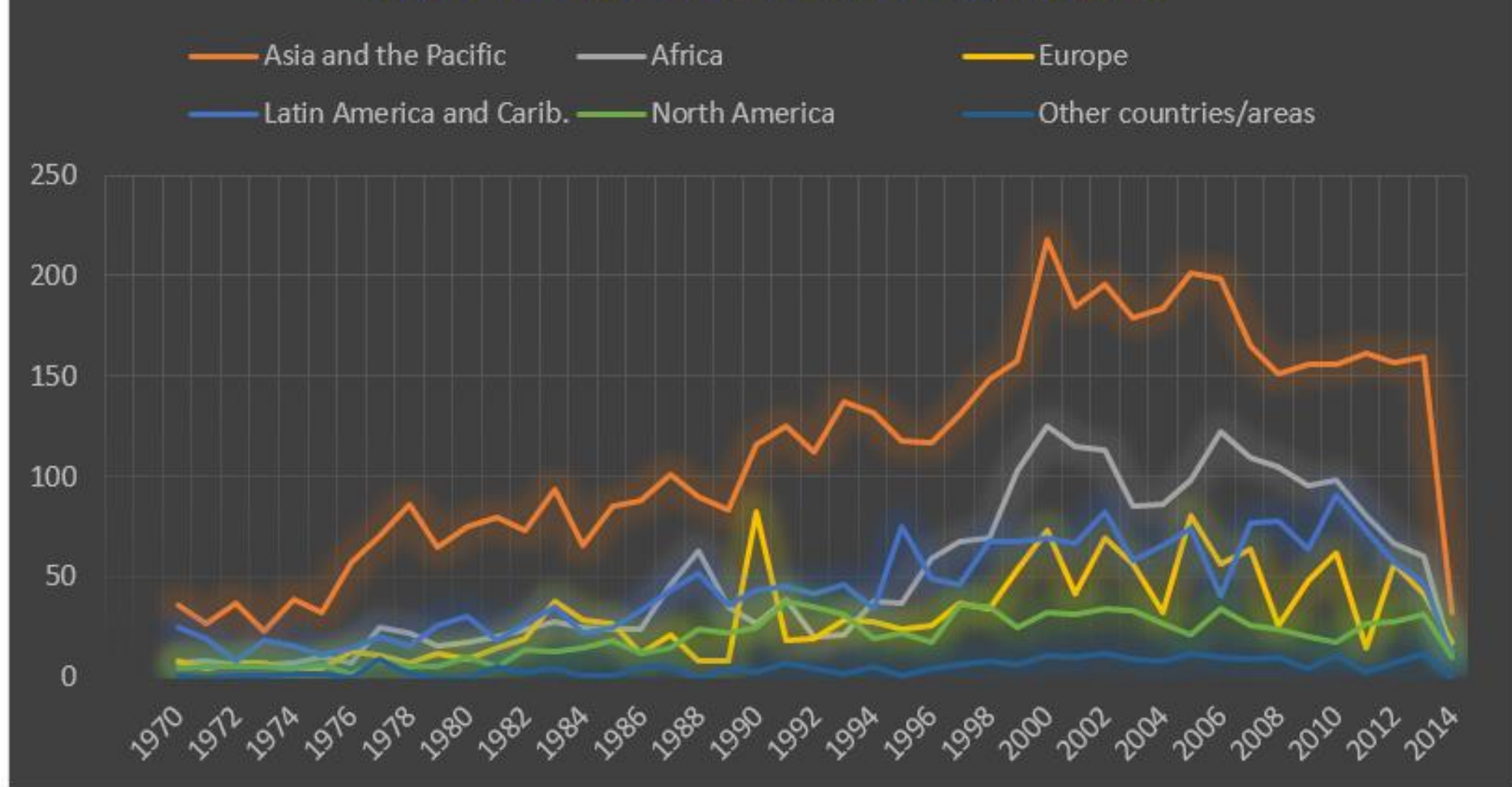


**Sources:**

- Centre for Research on the Epidemiology of Disasters (CRED)
- United Nations Office for Disaster Risk Reduction (UNISDR)

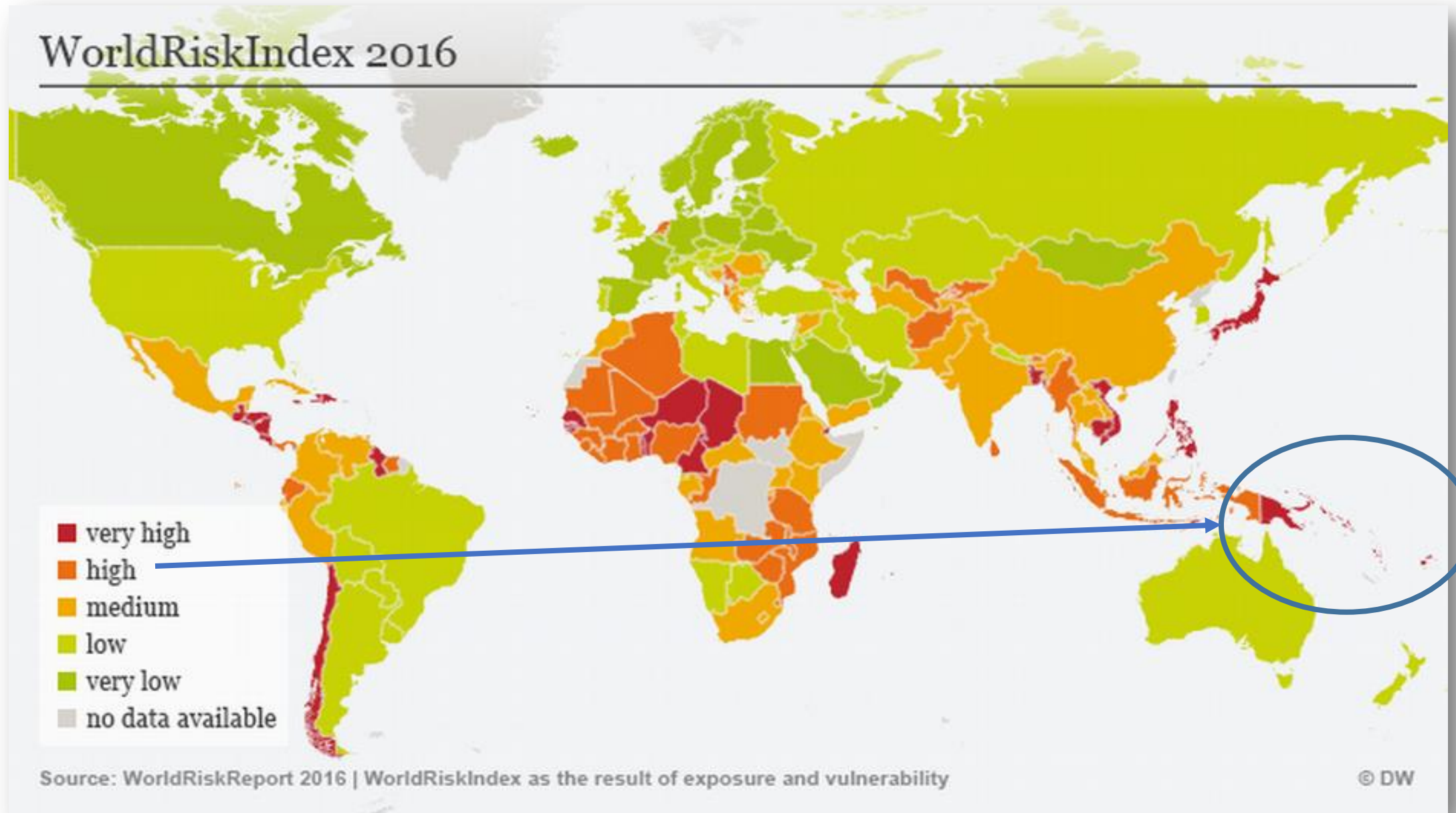
# Environmental changes

## Major Natural Disaster Events by Region

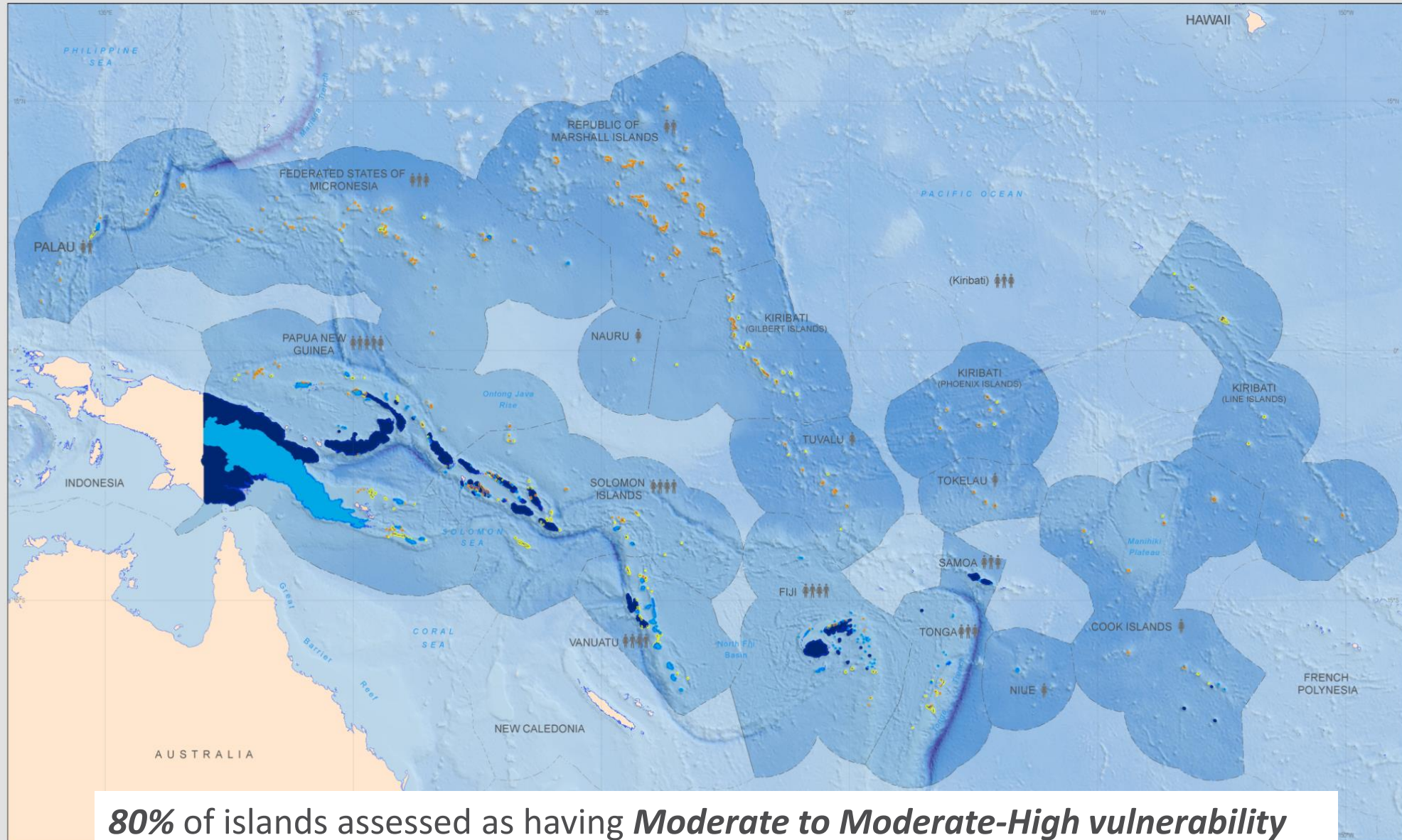


Statistics on major natural disasters compiled by the United Nations Economic and Social Commission for Asia and the Pacific

# Environmental changes



# Environmental changes



**80%** of islands assessed as having *Moderate to Moderate-High vulnerability*

Source Dawson, Geoscience Australia

# What are the Capabilities?

The ability (skill sets) to –

- ***Provide reliable, accurate and interoperable technical / administrative geospatial information and data*** for better informed decision making – “24 / 7 and real time”?
- ***Collect, calculate, analyse, evaluate, record, and visualise*** geospatial information and data – via “disruptive technologies”?
- ***Convey professional advice*** to support - design, risk assessment, investment analysis, asset and resource deployment – “broadening of skills”?
- ***Innovate in multi disciplinary teams*** – “connecting / pooling” talent to facilitate doing more with less consumption of diminishing resources

# What are the Capabilities?

The ability ('softer' skill sets) to –

- ***Lead, negotiate, influence, collaborate, and understand commercial influences***
- ***Advocate, promote and communicate relevance*** – influence leaders, decision makers, politicians; attract a diverse group of professionals
- ***Develop / administer business plans***; outcome / output focused; have qualitative and quantitative monitoring / evaluation framework – justifying why we do things?
- ***Sustain “development”*** – implement a plan within the region to be self reliant and self determinate

# What are the Capabilities?

*How skills and work in surveying are changing....*

What's not desirable	What's needed today
Silo working	Outcomes focus
Early specialisation	Communication
Conflicts of interest	Integrated programme and cost management
	Skills for handling greater complexity
	Interdisciplinary working
	Change management
	Advisory services
	Understanding new technology

What's decreasing	What needs to increase
Transactional activity	Leadership
Administrative tasks eg bills of quantities	Client focus
Residential valuation	Collaboration
	Ethical behaviour
	Sustainability
	Data analysis
	Improving productivity of assets
	Risk management

Source – [rics.org/futures](https://www.rics.org/futures)



# Capacity Development - Options for Geospatial / Geodetic Infrastructure Modernisation

## 1. *Assess the status and condition of geospatial / geodetic infrastructure and systems - SWOT “geospatial data model / framework”*

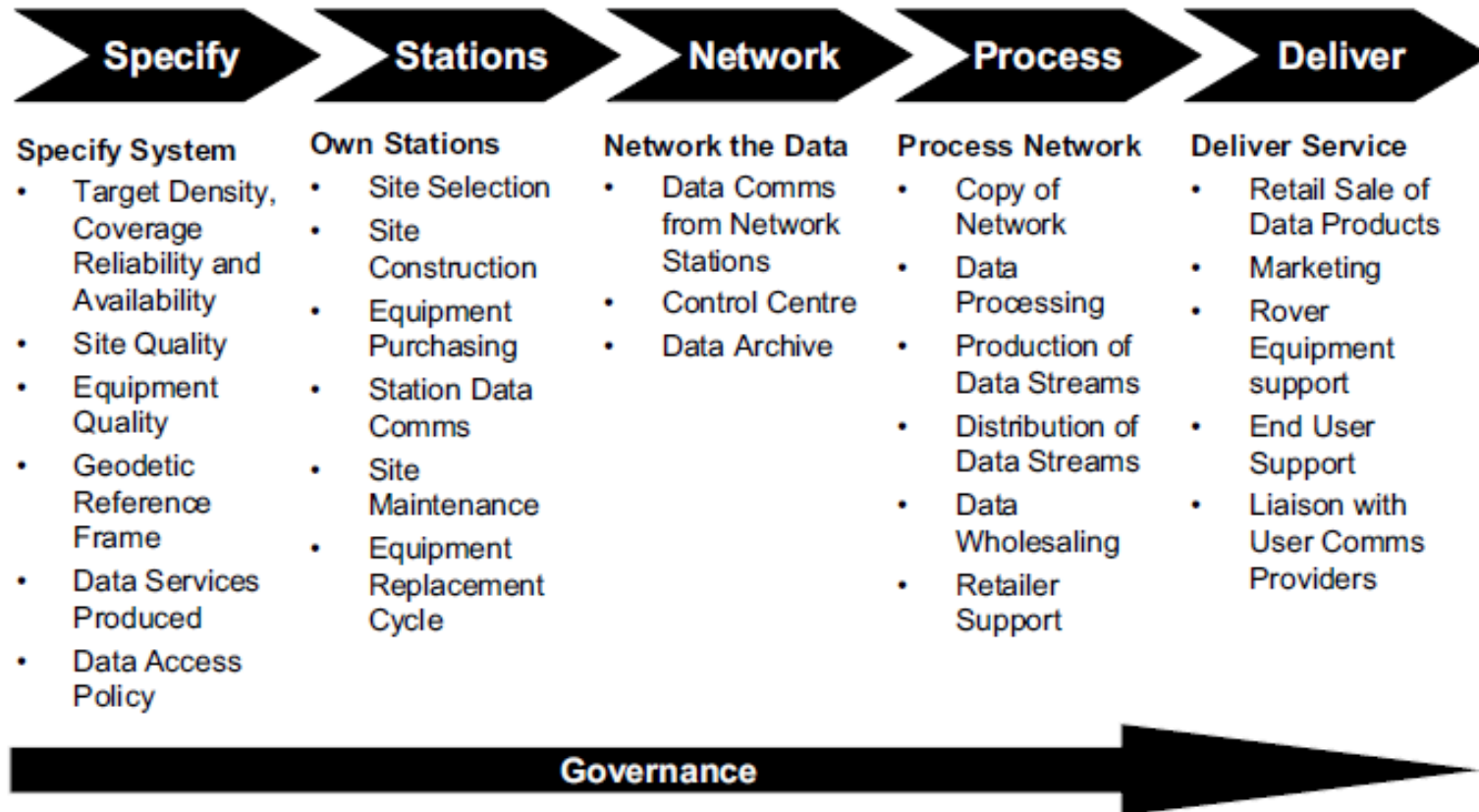


*Framework Source*

© Dr. Vanessa Lawrence CB, Gilles Albaredes, John Schonegevel, Maurits van der Vlugt

# Capacity Development - Options for Geospatial / Geodetic Infrastructure Modernisation

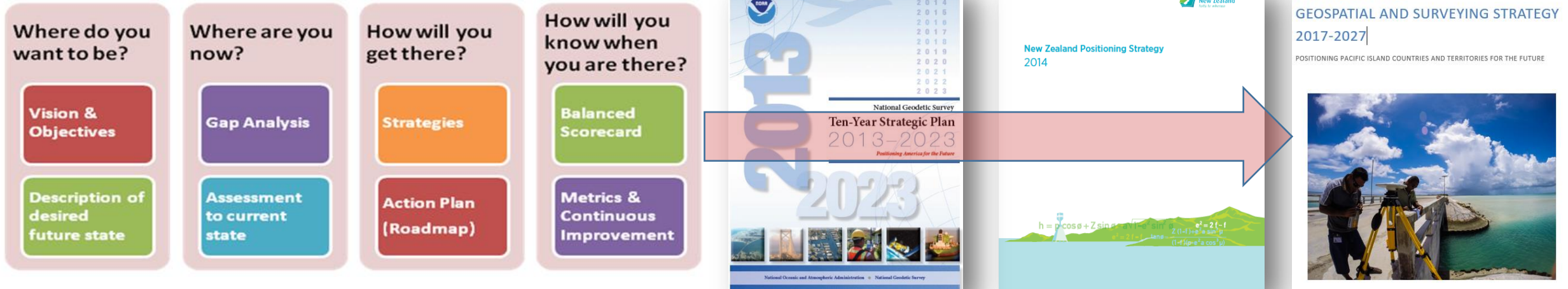
## 2. *Understand / define the role / responsibilities of an agency in the various elements of geospatial and geodetic infrastructure management*



Source - Matt Higgins "A model for organisational roles within a Positioning Infrastructure"

# Capacity Development - Options for Geospatial / Geodetic Infrastructure Modernisation

**3. Develop Strategic / Operational (incl. capacity building) plans that are aspirational but realistic, achievable, focused on national / regional challenges and flexible to accommodate a rapidly changing industry.....**



# Capacity Development - Options for Geospatial / Geodetic Infrastructure Modernisation

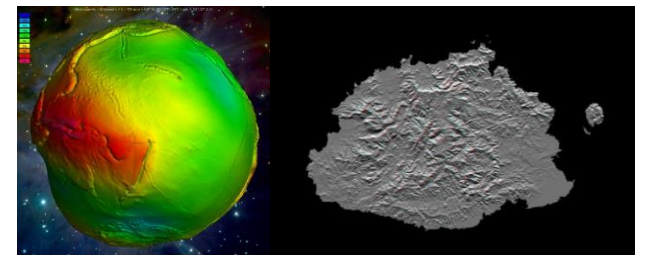
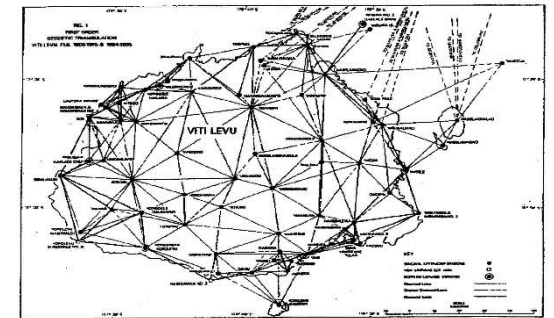
4. **Ensure Geospatial Reference System (GRS) / geodetic framework are integral to a nation's "fundamental or foundation" datasets ..... underpins / enables !**
- "common asset" of location information to make decisions that affect people's safety, prosperity, and environment
  - comprising of the best available, most current, authoritative source of foundation spatial data which is standardised and quality controlled



Source - <http://www.anzlic.gov.au/fsdf-themes-datasets>

# Capacity Development - Options for Geospatial / Geodetic Infrastructure Modernisation

5. *Derive / maintain TECHNICAL components GRS / geodetic framework*
- *IGS compliant GNSS CORS that are the spine of a GRS ; contribute to ITRF / APREF.*
  - *GRS mathematically aligned with ITRF / APREF realisations*
  - *Control networks are a hierarchy of rigorously propagated coordinates and uncertainties - integrity, reliability and accuracy are “fit for purpose”*
  - *Geoid model and / or defined height system to integrate vertical surfaces (land and water, intertidal zone)*



# Capacity Development - Options for Geospatial / Geodetic Infrastructure Modernisation

- *Utilise and benefit from the **multi GNSS environment** and space based measurement technology*

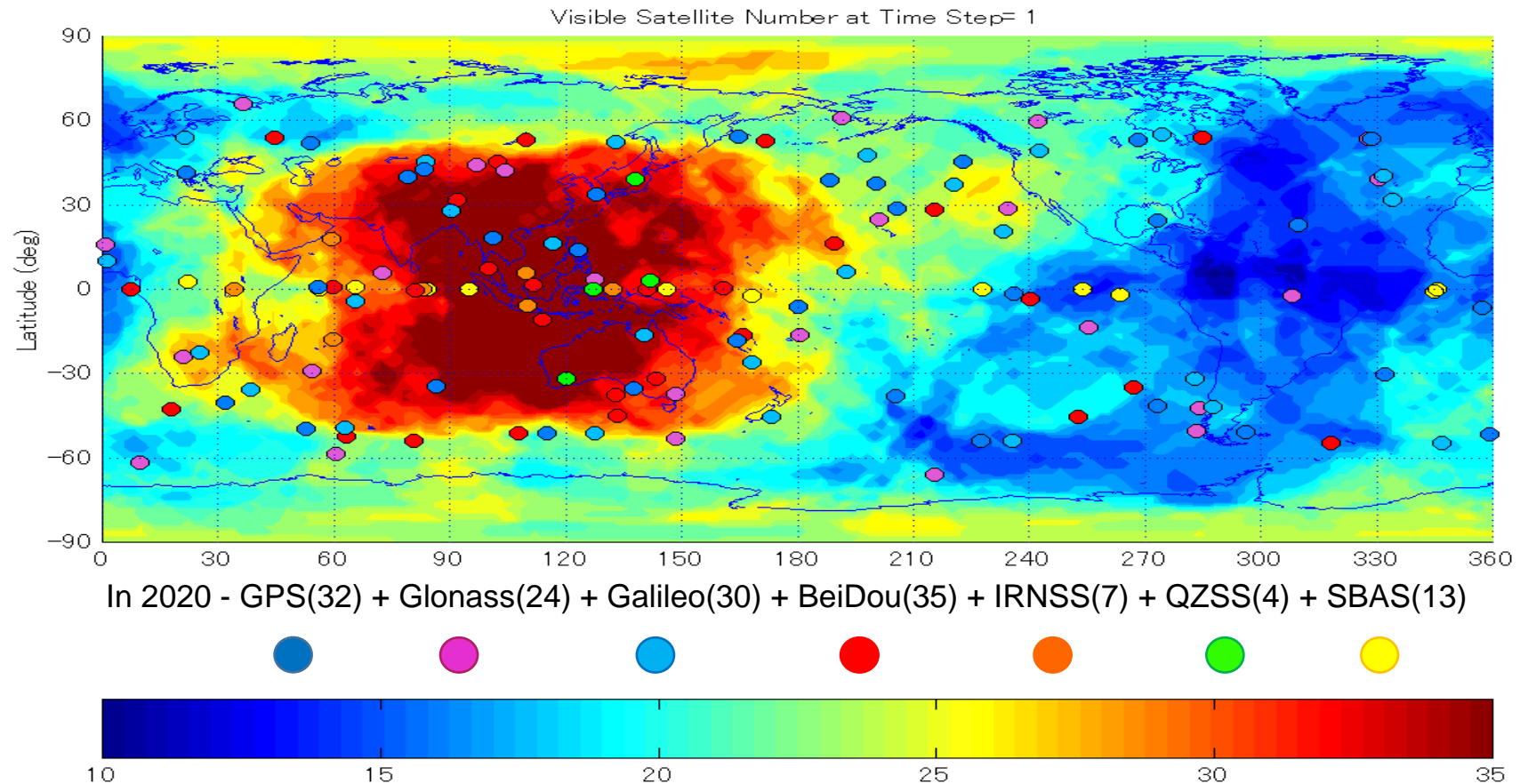


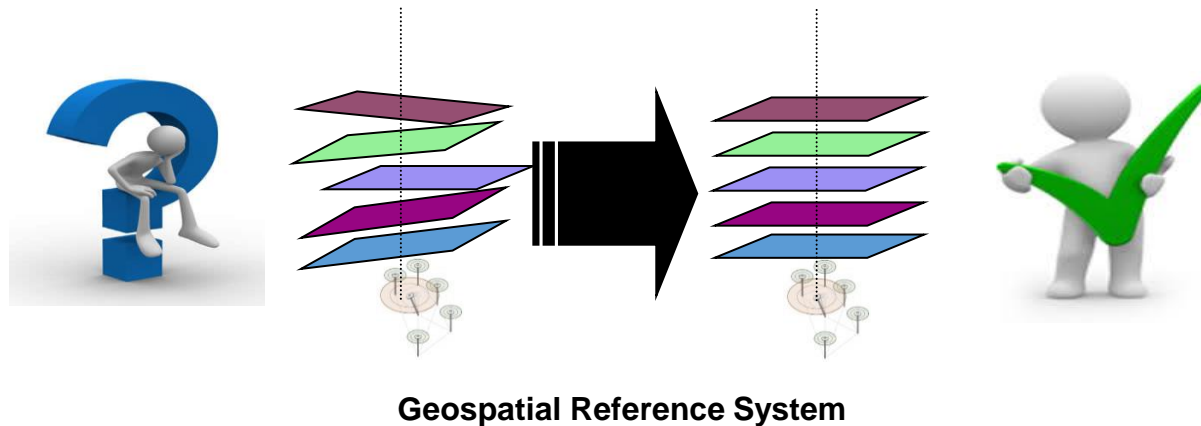
Figure courtesy Prof Chris Rizos, UNSW

# Capacity Development - Options for Geospatial / Geodetic Infrastructure Modernisation

- Adhere to **international standards, guidelines and practices** (includes metadata)



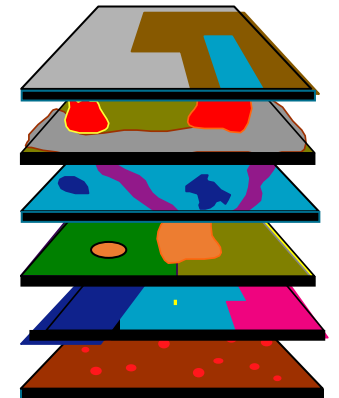
- Facilitate **interoperability and unification amongst geospatial information datasets and systems** at all levels – local, national, regional, and global via **Location Intelligence**



Geospatial Reference System

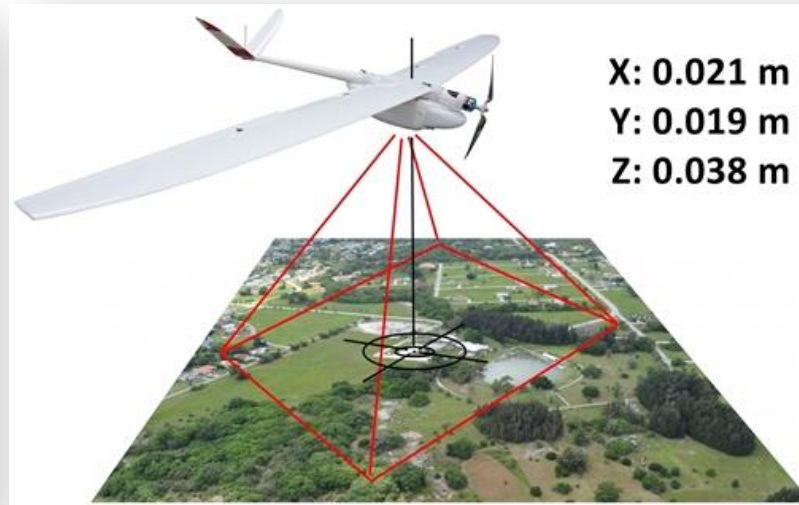
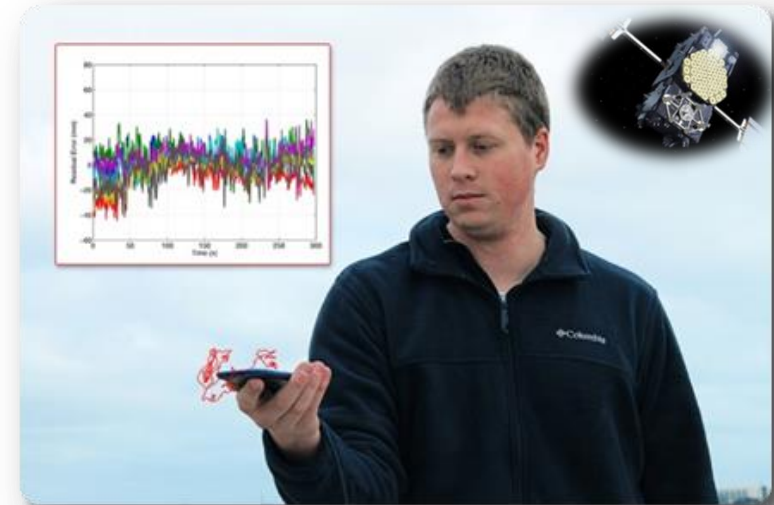
**High quality, timely and reliable data**

Geodetic  
Elevation  
Water/Ocean  
Land use/cover  
Transport  
Cadastre  
Population  
Infrastructure  
Settlements  
Admin. Bdys.  
Imagery  
Geology/soils  
Observations etc.



# Capacity Development - Options for Geospatial / Geodetic Infrastructure Modernisation

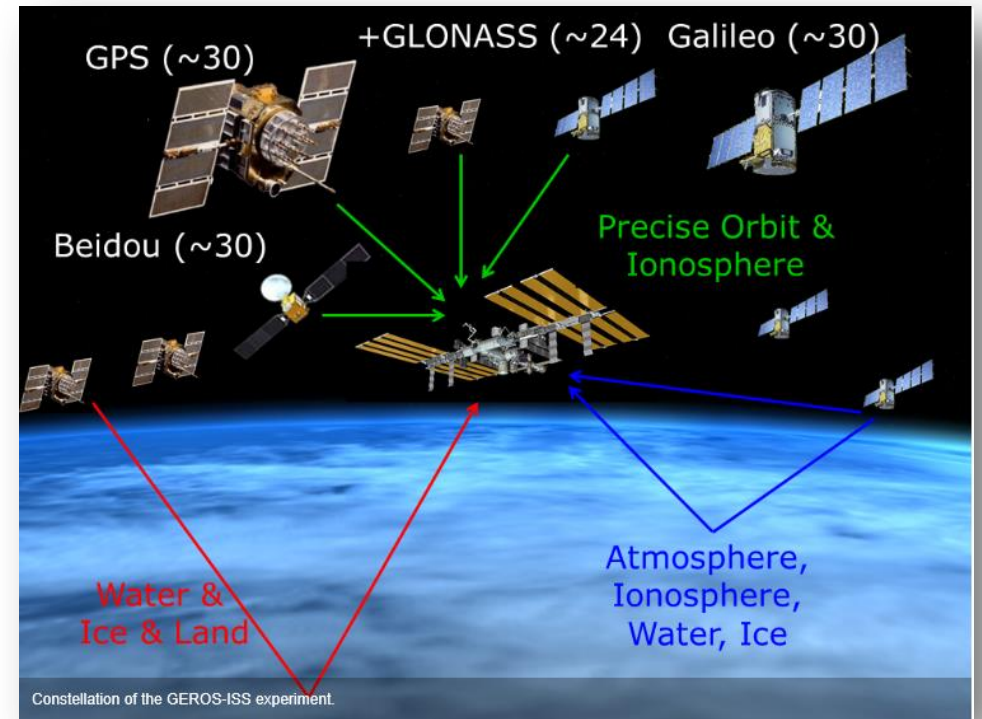
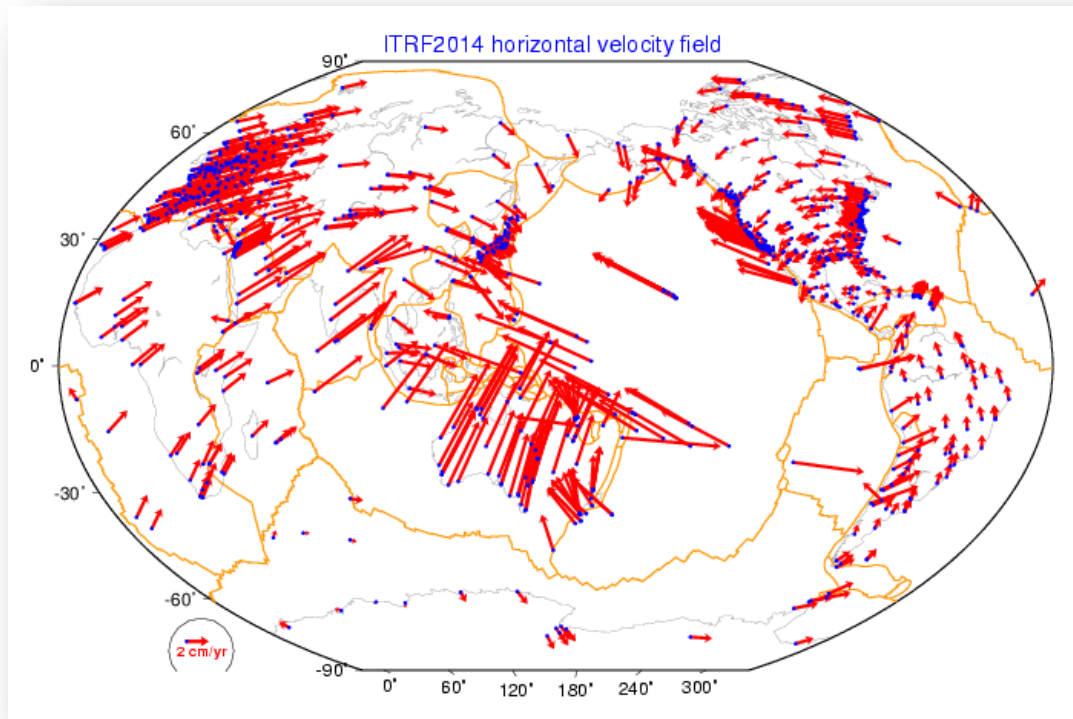
- *Align with new mass-market wide area positioning technology and applications i.e. regional and global real time positioning services delivered by satellite, digital communications, and the Internet*
- *Utilise or benefit from quality imagery / satellite data, the development of new mapping technologies and products*





# Capacity Development - Options for Geospatial / Geodetic Infrastructure Modernisation

- *The capability to support global observing systems for accurate scientific research modelling - inter / intra tectonic plate deformation, sea level monitoring, climate change, atmospheric*



# The International Federation of Surveyors (FIG)

## The quest for capacity development – making it work

“Don’t start what you can’t sustain”

Provisions for ongoing updating and possible upgrading are crucial and must be established up front.

Capacity development relates to societal awareness, institutional and organisational reform, and education and training of human resources.



The way forward includes understanding and cooperation between UN-agencies, professional organisations, and national governments

To drive and manage the change process there must be effective knowledge-sharing to ensure that lessons learned and good practice are widely implemented.

*Stig Enemark FIG African Capacity Development Network  
Nairobi 2015*

*“Good co-ordination begins with good co-ordinates..”*

*Dave Doyle FIG Regional Conference Costa Rica  
2007*

*“We now have the will and opportunity to make an impact..”*

*Greg Scott UN GGIM AP Plenary Meeting  
Malaysia 2016*

